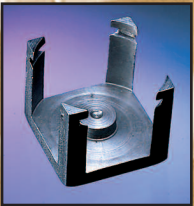
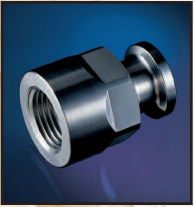


# PENNMET 2000

# SUPERIOR STAINLESS

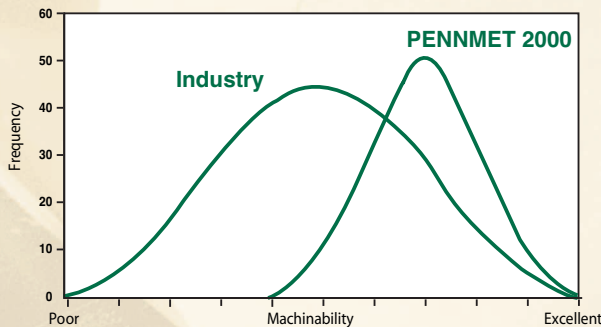
## MACHINING BAR FOR THE NEW MILLENNIUM



Parts shown machined  
from PennMet 2000

- Improved machinability
- Consistent performance from lot to lot
- Longer tool life
- Improved surface finish
- Excellent availability

### MACHINABILITY DISTRIBUTION



When it comes to improving your bottom line, machinability is critical to success.

PennMet 2000 Stainless is made to consistent standards, and offers you maximum performance. With predictable properties, PennMet 2000 will help you to achieve higher machining speeds and feeds, and lower costs per part produced.



Stay ahead of the competition by ensuring maximum productivity. Call Penn Stainless

Products and order PennMet 2000 – tomorrow's stainless available today. Machining bar inventory in round, square and hex. For

information on pricing, availability, and to order, call 1-800-222-6144.

**Why Buy Risk When  
You Can Purchase  
Proven Productivity**

Penn Stainless Products • 190 Kelly Road



[www.pennstainless.com](http://www.pennstainless.com)

P.O. Box 9001 • Quakertown, PA 18951-9001

## SUPERIOR STAINLESS

Tight controls on chemistry, mechanical properties, and process control make PennMet 2000 a superior choice.

| PIPE THREAD SIZES (NPSC) |         |
|--------------------------|---------|
| Thread                   | Drill   |
| 1/8 - 27                 | 11/32   |
| 1/4 - 18                 | 7/16    |
| 3/8 - 18                 | 37/64   |
| 1/2 - 14                 | 23/32   |
| 3/4 - 14                 | 59/64   |
| 1 - 11-1/2               | 1-5/32  |
| 1-1/4 - 11-1/2           | 1-1/2   |
| 1-1/2 - 11-1/2           | 1-3/4   |
| 2 - 11-1/2               | 2-7/32  |
| 2-1/2 - 8                | 2-21/32 |
| 3 - 8                    | 3-1/4   |
| 3-1/2 - 8                | 3-3/4   |
| 4 - 8                    | 4-1/4   |

| fraction or drill size | decimal equivalent | tap size | fraction or drill size | decimal equivalent | tap size | fraction or drill size | decimal equivalent | tap size |
|------------------------|--------------------|----------|------------------------|--------------------|----------|------------------------|--------------------|----------|
| 1/64                   | 80                 | 0.0135   | 9/64                   | 28                 | 0.1405   | 23/64                  | T                  | 0.3580   |
|                        | 79                 | 0.0145   |                        |                    | 0.1406   |                        | U                  | 0.3594   |
|                        |                    | 0.0156   |                        | 27                 | 0.1440   |                        | 3/8                | 0.3680   |
|                        | 78                 | 0.0160   |                        | 26                 | 0.1470   | 10-24                  | V                  | 0.3750   |
|                        | 77                 | 0.0180   |                        | 25                 | 0.1495   |                        | W                  | 0.3770   |
|                        | 76                 | 0.0200   |                        | 24                 | 0.1520   |                        |                    | 0.3860   |
|                        | 75                 | 0.0210   |                        | 23                 | 0.1540   | 25/64                  |                    | 0.3906   |
|                        | 74                 | 0.0225   | 5/32                   |                    | 0.1562   |                        | X                  | 0.3970   |
|                        | 73                 | 0.0240   |                        | 22                 | 0.1570   |                        | Y                  | 0.4040   |
|                        | 72                 | 0.0250   |                        | 21                 | 0.1590   | 10-32                  | 13/32              | 0.4062   |
|                        | 71                 | 0.0260   |                        | 20                 | 0.1610   |                        | Z                  | 0.4130   |
|                        | 70                 | 0.0280   |                        | 19                 | 0.1660   |                        |                    | 0.4219   |
|                        | 69                 | 0.0292   |                        | 18                 | 0.1695   | 27/64                  |                    | 0.4219   |
|                        | 68                 | 0.0310   |                        | 17/64              | 0.1719   |                        | 7/16               | 0.4375   |
| 1/32                   |                    | 0.0312   |                        |                    | 0.1730   | 29/64                  |                    | 0.4531   |
|                        | 67                 | 0.0320   |                        | 16                 | 0.1770   | 12-24                  |                    | 0.4531   |
|                        | 66                 | 0.0330   |                        | 15                 | 0.1800   | 12-28                  |                    | 0.4688   |
|                        | 65                 | 0.0350   |                        | 14                 | 0.1820   |                        | 1/2                | 0.4688   |
|                        | 64                 | 0.0360   |                        | 13                 | 0.1850   | 31/64                  |                    | 0.4844   |
|                        | 63                 | 0.0370   |                        |                    | 0.1875   |                        | 1/2                | 0.4844   |
|                        | 62                 | 0.0380   | 3/16                   |                    | 0.1890   |                        | 33/64              | 0.5156   |
|                        | 61                 | 0.0390   |                        | 12                 | 0.1890   |                        | 17/32              | 0.5156   |
|                        | 60                 | 0.0400   |                        | 11                 | 0.1910   |                        | 35/64              | 0.5469   |
|                        | 59                 | 0.0410   |                        | 10                 | 0.1935   |                        | 9/16               | 0.5625   |
|                        | 58                 | 0.0420   |                        | 9                  | 0.1960   |                        |                    | 0.5625   |
|                        | 57                 | 0.0430   |                        | 8                  | 0.1990   |                        | 37/64              | 0.5781   |
|                        | 56                 | 0.0465   |                        | 7                  | 0.2010   | 1/4-20                 | 19/32              | 0.5938   |
| 3/64                   |                    | 0.0469   | 13/64                  |                    | 0.2031   |                        | 39/64              | 0.6094   |
|                        | 55                 | 0.0520   |                        | 6                  | 0.2040   |                        | 5/8                | 0.6250   |
|                        | 54                 | 0.0550   |                        | 5                  | 0.2055   |                        | 41/64              | 0.6406   |
|                        | 53                 | 0.0595   | 1-64,72                | 4                  | 0.2090   |                        | 21/32              | 0.6562   |
| 1/16                   |                    | 0.0625   |                        | 3                  | 0.2130   | 1/4-28                 | 43/64              | 0.6719   |
|                        | 52                 | 0.0635   |                        |                    | 0.2188   |                        | 11/16              | 0.6875   |
|                        | 51                 | 0.0670   |                        | 2                  | 0.2210   |                        | 45/64              | 0.7031   |
|                        | 50                 | 0.0700   | 2-56,64                | 1                  | 0.2280   |                        | 23/32              | 0.7188   |
|                        | 49                 | 0.0730   |                        | A                  | 0.2340   |                        | 47/64              | 0.7344   |
|                        | 48                 | 0.0760   |                        |                    | 0.2344   | 15/64                  | 3/4                | 0.7500   |
| 5/64                   |                    | 0.0781   |                        | B                  | 0.2380   |                        | 49/64              | 0.7656   |
|                        | 47                 | 0.0785   | 3-48                   | C                  | 0.2420   |                        | 25/32              | 0.7812   |
|                        | 46                 | 0.0810   | 3-56                   | D                  | 0.2460   |                        | 51/64              | 0.7969   |
|                        | 45                 | 0.0820   |                        | 1/4                | 0.2500   | 5/16-18                | 13/16              | 0.8125   |
|                        | 44                 | 0.0860   |                        | F                  | 0.2570   |                        | 53/64              | 0.8281   |
|                        | 43                 | 0.0890   | 4-40                   | G                  | 0.2610   |                        | 27/32              | 0.8438   |
|                        | 42                 | 0.0935   | 4-48                   |                    | 0.2656   | 17/64                  | 55/64              | 0.8594   |
| 3/32                   |                    | 0.0938   |                        | H                  | 0.2660   |                        | 7/8                | 0.8750   |
|                        | 41                 | 0.0960   |                        | I                  | 0.2720   | 5/16-24                | 57/64              | 0.8906   |
|                        | 40                 | 0.0980   |                        | J                  | 0.2770   |                        | 29/32              | 0.9062   |
|                        | 39                 | 0.0995   |                        | K                  | 0.2810   |                        | 59/64              | 0.9219   |
|                        | 38                 | 0.1015   | 5-40                   |                    | 0.2812   | 9/32                   | 15/16              | 0.9375   |
|                        | 37                 | 0.1040   | 5-44                   | L                  | 0.2900   |                        | 61/64              | 0.9531   |
|                        | 36                 | 0.1065   | 6-32                   | M                  | 0.2950   |                        | 31/32              | 0.9688   |
| 7/64                   |                    | 0.1094   |                        |                    | 0.2969   | 19/64                  | 1                  | 1.0000   |
|                        | 35                 | 0.1100   |                        | N                  | 0.3020   |                        | 1-3/64             | 1.0469   |
|                        | 34                 | 0.1110   |                        | 5/16               | 0.3125   | 3/8-16                 | 1-7/64             | 1.1094   |
|                        | 33                 | 0.1130   | 6-40                   | O                  | 0.3160   |                        | 1-1/8              | 1.1250   |
|                        | 32                 | 0.1160   |                        | P                  | 0.3230   |                        | 1-11/64            | 1.1719   |
|                        | 31                 | 0.1200   |                        |                    | 0.3281   | 21/64                  | 1-7/32             | 1.2188   |
|                        | 30                 | 0.1285   |                        | Q                  | 0.3320   |                        | 1-1/4              | 1.2500   |
| 1/8                    |                    | 0.1250   |                        | R                  | 0.3390   | 3/8-24                 | 1-19/64            | 1.2969   |
|                        | 29                 | 0.1360   | 8-32,36                |                    | 0.3438   |                        | 1-11/32            | 1.3438   |
|                        |                    |          |                        | S                  | 0.3480   |                        | 1-3/8              | 1.3750   |
|                        |                    |          |                        |                    |          |                        | 1-27/64            | 1.4219   |
|                        |                    |          |                        |                    |          |                        | 1-1/2              | 1.5000   |



**Penn Stainless Products**  
 190 Kelly Road  
 P.O. Box 9001  
 Quakertown, PA 18951-9001  
 Phone: 215.536.3053  
 800.222.6144  
 Fax: 215.536.3255  
[www.pennstainless.com](http://www.pennstainless.com)